



The Low Power Programmable Leader

Corporate Overview

February 2024

Safe Harbor Statement

This presentation contains forward-looking statements within the meaning of the Private Securities Litigation Reform Act of 1995 that involve estimates, assumptions, risks and uncertainties. Any statements about our expectations, beliefs, plans, objectives, assumptions or future events or performance are not historical facts and may be forward-looking. Such forward-looking statements include, but are not limited to, statements relating to new greenfield growth opportunities; our market position; our product portfolio expansion; our ability to solve customer challenges; and growth in our customer base. Other forward-looking statements may be indicated by words such as “will,” “could,” “should,” “would,” “may,” “expect,” “plan,” “project,” “anticipate,” “intend,” “forecast,” “future,” “believe,” “estimate,” “predict,” “propose,” “possible,” “potential,” “continue,” “ongoing,” or the negative of these terms or other comparable terminology. Factors that may cause actual results to differ materially from the forward-looking statements in this presentation include global economic conditions which may affect customer demand, pricing and inflationary pressures, competitive actions, market cyclicalities, international trade disputes, tariffs, and sanctions, new or ongoing nation or military conflicts, global pandemics, cybersecurity threats and incidents, and those risks more fully described in Item 1A in the Company’s Annual Report on Form 10-K for the fiscal year ended December 30, 2023, and as may be supplemented from time-to-time in the Company’s other filings with the Securities and Exchange Commission, all of which are expressly incorporated herein by reference. You should not rely on forward-looking statements because actual results could differ materially from those expressed in any forward-looking statements. In addition, any forward-looking statement applies only as of the date on which it is made. We do not intend to, and undertake no obligation to, update or revise any forward-looking statements, whether as a result of events or circumstances after the date hereof or to reflect the occurrence of unanticipated events.

Use of non-GAAP Financial Information

To supplement the Company's financial statements presented on a GAAP basis, we have provided non-GAAP financial information in this presentation, including non-GAAP gross margin, gross margin percentage, earnings per share, operating profit, R&D expense, SG&A expense, and operating expenses. Non-GAAP financial information is not meant as a substitute for GAAP results but is included because management uses such information to evaluate and manage the Company and believes such information is useful to our investors for informational and comparative purposes. These non-GAAP measures should be considered in addition to, and not as a substitute for, the results prepared in accordance with GAAP. See appendix in FY'23 earnings reports for reconciliation to most comparable GAAP measure.

Agenda

1



Company Overview

2



Products & Solutions

3



End Markets & Applications

4



Financials

Our Mission



The Low Power Programmable Leader

Lattice Semiconductor Overview

APPLICATIONS & MARKETS

We enable secure control, flexible connectivity, and low power compute acceleration



COMMUNICATIONS & COMPUTING

35%



INDUSTRIAL & AUTOMOTIVE

59%



CONSUMER

6%

WORLD CLASS SUPPLIER

#1

World's largest volume supplier of FPGA

Tier 1

Supplier with 40 years of innovation



GROWING CUSTOMER BASE



GLOBAL SUPPORT



Lattice Executive Leadership Team



Jim Anderson
CEO



Sherri Luther
CFO



Pravin Desale
Research & Development



Steve Douglass
CTO



Esam Elashmawi
CSMO



Tracy Feanny
General Counsel



Terese Kemble
Human Resources



Denis Lavallee
Mirametrix



Mark Nelson
Sales



Glenn O'Rourke
Operations & Quality

Holding Ourselves to the Highest Corporate Stewardship Standards

CULTURE OF INNOVATION



ENVIRONMENTALLY CONSCIOUS



INCLUSION & SOCIAL WELLBEING



TRANSPARENCY & INTEGRITY



GSA MOST RESPECTED PUBLIC COMPANY FOUR YEARS IN A ROW



STRONG & GROWING RECOGNITION FOR CLEANTECH PRODUCT INNOVATION



Agenda

1 Company Overview

2 Products & Solutions

3 End Markets & Applications

4 Financials

Lattice Value Proposition

Smallest
SIZE



Lowest
POWER



Highest
SECURITY



RELIABLE
by Design



EASE
of Use



Lattice FPGA Portfolio

PLATFORM

DEVICE FAMILIES

LATTICE
AVANT™



Avant™-E

Edge-optimized
Processing



Avant™-G

Cutting-edge General
Purpose Processing



Avant™-X

Advanced
Connectivity

LATTICE
NEXUS™



CrossLink™-NX

Embedded Vision
Processing



Certus™-NX

General Purpose
Processing



Mach™-NX

Next Gen Hardware
Security



CertusPro™-NX

Advanced General
Purpose Processing



MachXO5™-NX

Enhanced System
Monitor and Control



MachXO5T™-NX

Advanced System
Control



CrossLinkU™-NX

Embedded Vision
Processing with USB

FPGA PLATFORM LEADERSHIP

LATTICE NEXUS™

Architected for applications requiring up to 10G SERDES and up to 100k LCs



LATTICE AVANT™

Architected for applications requiring up to 25G SERDES and up to 500k LCs



**LOWER
POWER**



**FASTER
PERFORMANCE**



**SMALLER
SIZE**

Software Solution Stack Portfolio



LATTICE sensAI™

Low Power Edge AI

High Performance Inference Under 1W

Supports Industry Standard ML Frameworks

Complete Solution Enablement



LATTICE mVISION™

Low Power Embedded Vision

Flexible Image Sensor Bridging & Aggregation

Image Processing Integration

Complete Solution Enablement



LATTICE Sentri™

Cyber Resilient Root of Trust

Secure Hardware Creates Root-of-Trust for Systems

Cryptographically Secured Supply Chain

Protection Against Cloning, Counterfeiting, Trojan Insertion, & Simulation



LATTICE Automate™

Accelerating Factory Automation

Accelerates industrial automation development

Supports use cases like motor control, real-time networking, & predictive maintenance

Complete solution enablement



LATTICE ORAN™

Enabling ORAN Deployment

Enables zero trust security and data protection in networks

Flexible, Tight Fronthaul Synchronization

Acceleration with Low Power



LATTICE Drive™

Adaptable Automotive Design

DisplayPort connectivity

Video scaling up to 4K

Local dimming for contrast enhancement

Bridging & networking

Leadership Computer Vision Capabilities



Presence Detection

Depth Sensing

3D Head & Gesture Tracking

Face ID & Landmarks Tracking

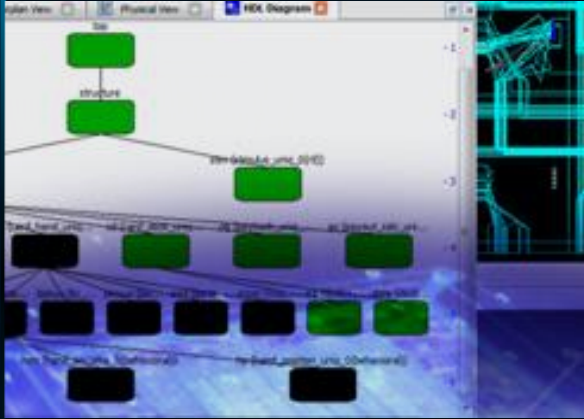
Eye Feature Detection & Tracking

Human Skeleton Detection

Object Detection

Advanced AI Technology for the Edge

Easy-to-use Software



Powerful FPGA Design & Verification Environment

- Easy Design Exploration
- Easy to Use Powerful Tools
- Optimized for Lattice Devices



Best-in-class, Easy-to-use Design Software

- Simplified Flow for Faster Design
- Increase Re-use with IP Tools
- Leading Synthesis & Simulation



Complete Toolset for Embedded System Design

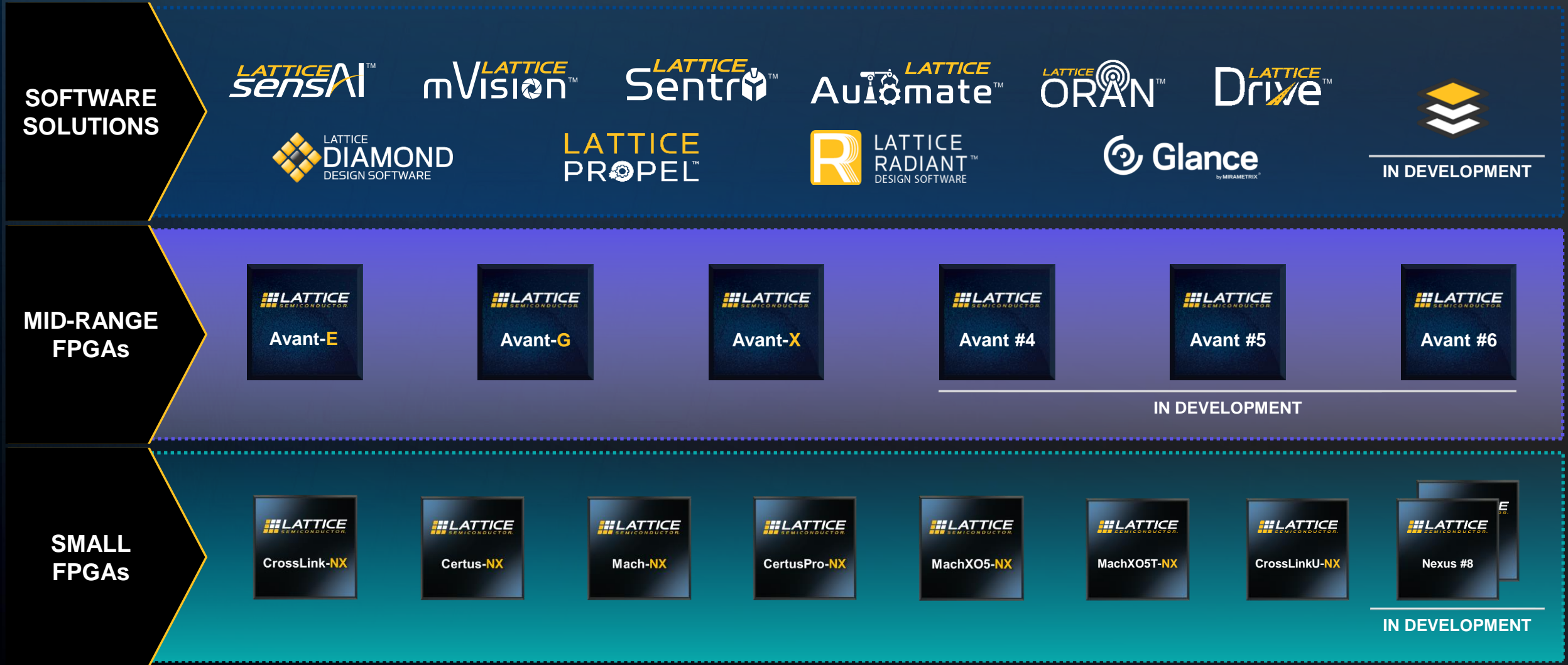
- IP System Integration Environment
- Software Development Kit & Libraries
- Build, Compile, Analyze, Debug



Advanced Computer Vision Software for the Edge

- Security and Privacy Protections
- Digital Wellbeing Capabilities
- Facilitates Intelligent Collaboration & Productivity

RAPID PRODUCT PORTFOLIO EXPANSION



Agenda

- 1 Company Overview
- 2 Products & Solutions
- 3 End Markets & Applications**
- 4 Financials

Positioned in Growing Markets

COMMUNICATIONS



5G Wireless
Switches/Routers

COMPUTING



Servers
Client

INDUSTRIAL



Industrial IoT
Factory Automation

AUTOMOTIVE



ADAS
Infotainment

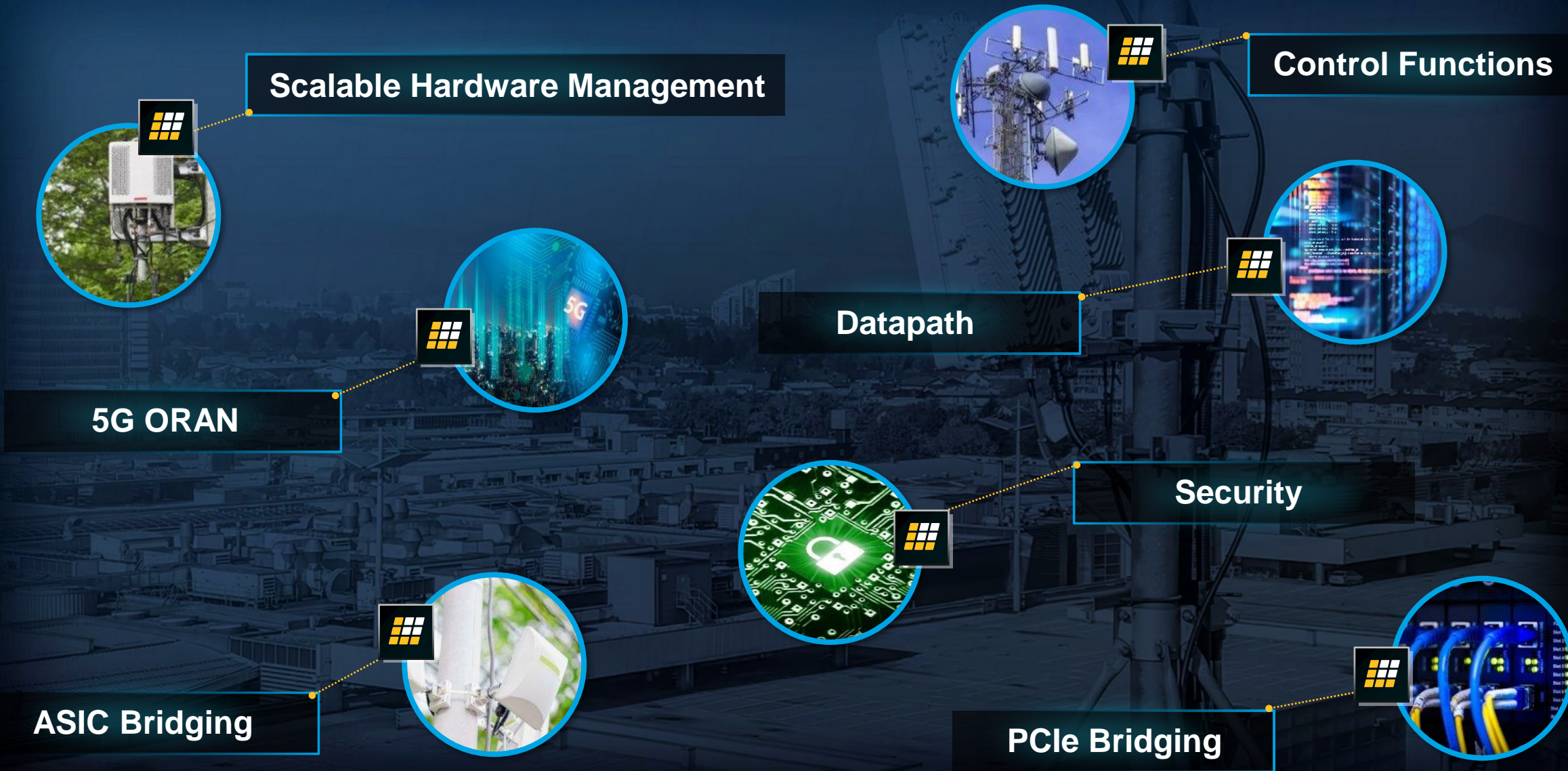
CONSUMER



Smart Home
On-the-Go

Leading the Industry in Low Power Programmability

Lattice Solves Communications Challenges



Lattice Solves Client Computing Challenges

Computer Vision AI

Image Quality Improvement

Enhanced Security

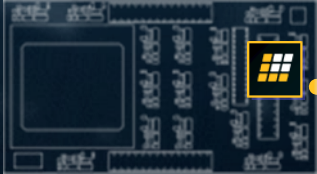
System Optimization

Client Computing is a Greenfield Opportunity for Lattice

Lattice Solves Datacenter Challenges

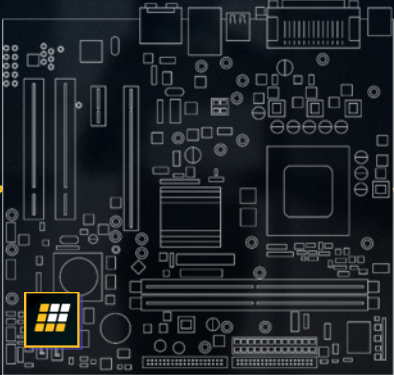
HARDWARE ACCELERATION

Offload
Attestation
Reporting



MOTHERBOARD

(CPU Agnostic)



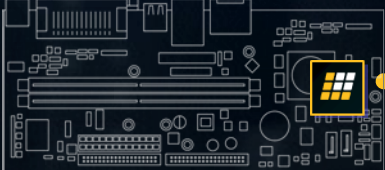
SECURE CONTROL MODULE

BMC
PROT / PFR
Attestation



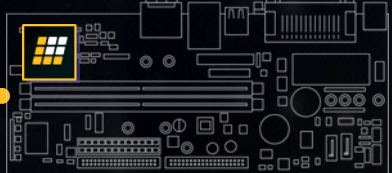
STORAGE CARD

Key Mgmt
Hot Swap
Hot Plug



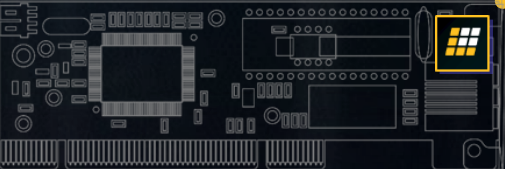
NETWORK CARD

Power Control
Reporting
Offload



GPU CARD

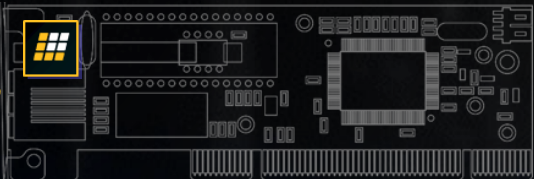
Power Control
Reporting
Throttling



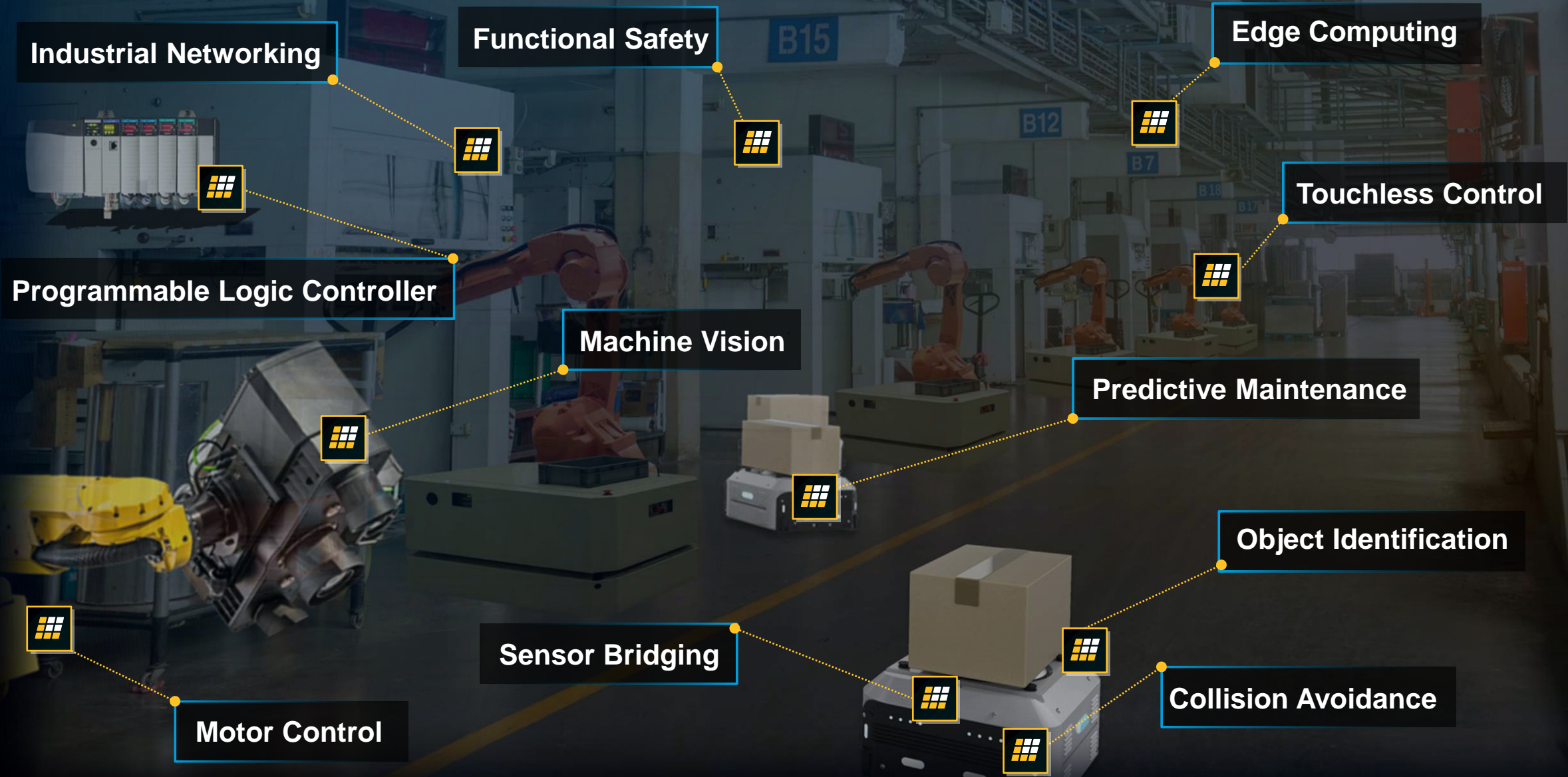
Bridging
I/O Expansion
Board Control
Power Sequence
Signal Aggregation
Glue Logic
Fan Control
Re-Timer

ADD-IN CARDS

Control
Bridging
Aggregation



Lattice Solves Industrial Challenges



Lattice Solves Automotive Challenges

INFOTAINMENT

- De-Fog
- 360° Surround View
- Display Bridging
- ISP

IN-CABIN AI

- Human Presence Detection
- Driver Monitoring

ADAS

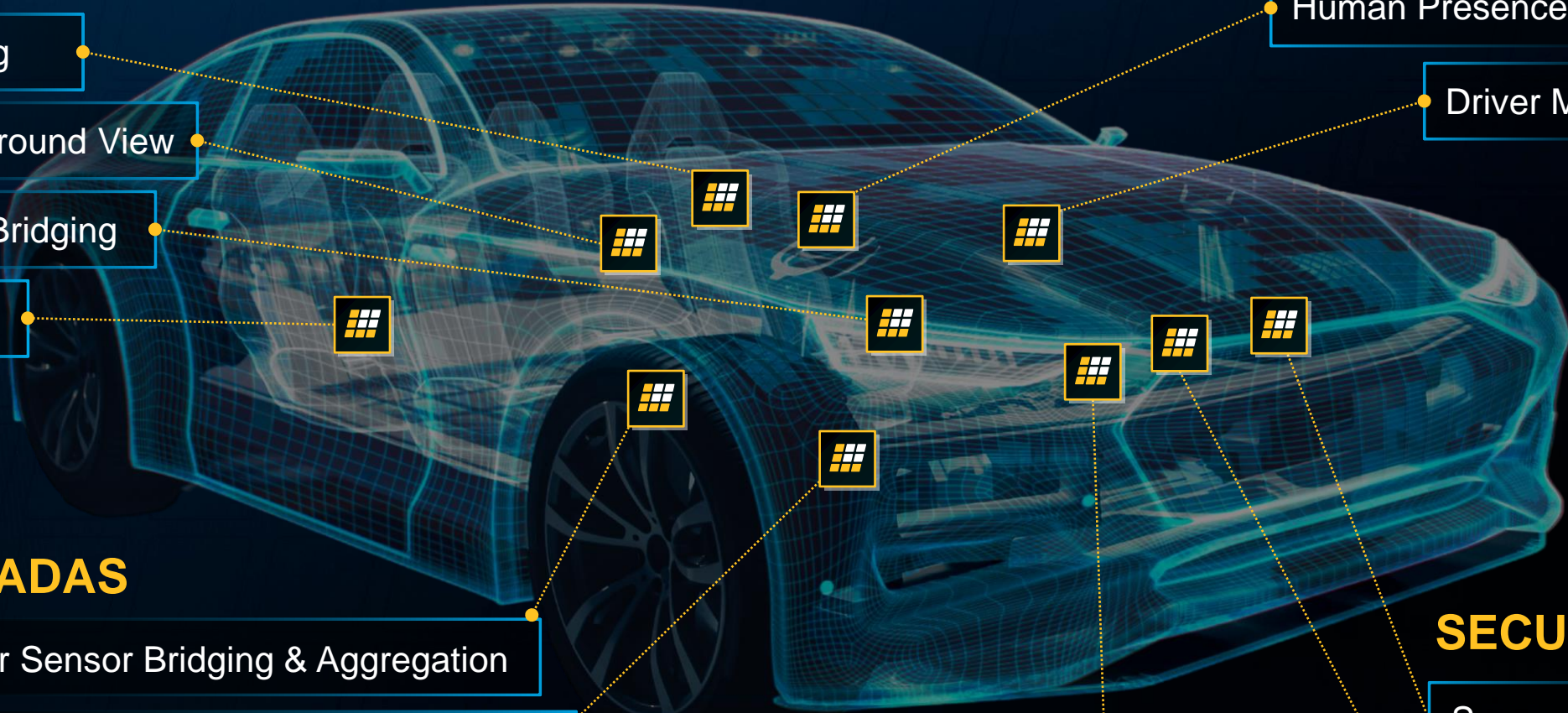
- Radar Sensor Bridging & Aggregation
- Image Sensor Bridging & Aggregation

HYBRID/ELECTRIC

- Inverter / Charger

SECURITY

- Secure Battery Mgt.
- Secure Boot



Lattice Solves Consumer Challenges

Drones



AR / VR



Smart Appliance



Smart Speaker



Consumer Robots



Video Surveillance



Wearable



Smart Doorbell



Smart Toys



Agenda

- 1 Company Overview
- 2 Products & Solutions
- 3 End Markets & Applications
- 4 Financials**

Lattice Semiconductor FY 2023 Earnings Results Highlights

REVENUE

↑ 12%

FY'23/FY'22

Record full year revenue of \$737.2M

“ We achieved double-digit annual revenue growth in 2023, with record gross margin and continued profit expansion. Despite near-term cyclical industry headwinds, we continue to be well positioned for the long-term with a rapidly expanding product portfolio and strong customer momentum. ”

Jim Anderson, President & CEO

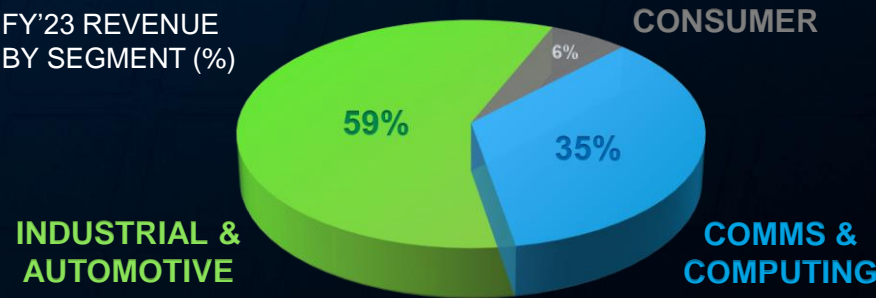
GROSS MARGIN

↑ 70.4%

Expanded by 130 bps vs FY'22

End Market Overview

FY'23 REVENUE BY SEGMENT (%)



INDUSTRIAL & AUTOMOTIVE

↑ 36%
FY'23/FY'22

COMMS & COMPUTING

↓ -9%
FY'23/FY'22

EARNINGS PER SHARE

↑ 14%

FY'23/FY'22

\$2.01 in FY'23 vs \$1.75 in FY'22

Recent Product & Corporate Momentum



Launched two new Avant FPGA families, expanded solution stacks, and enhanced software capabilities



Introduced a collaboration with NVIDIA with a new Edge AI reference platform

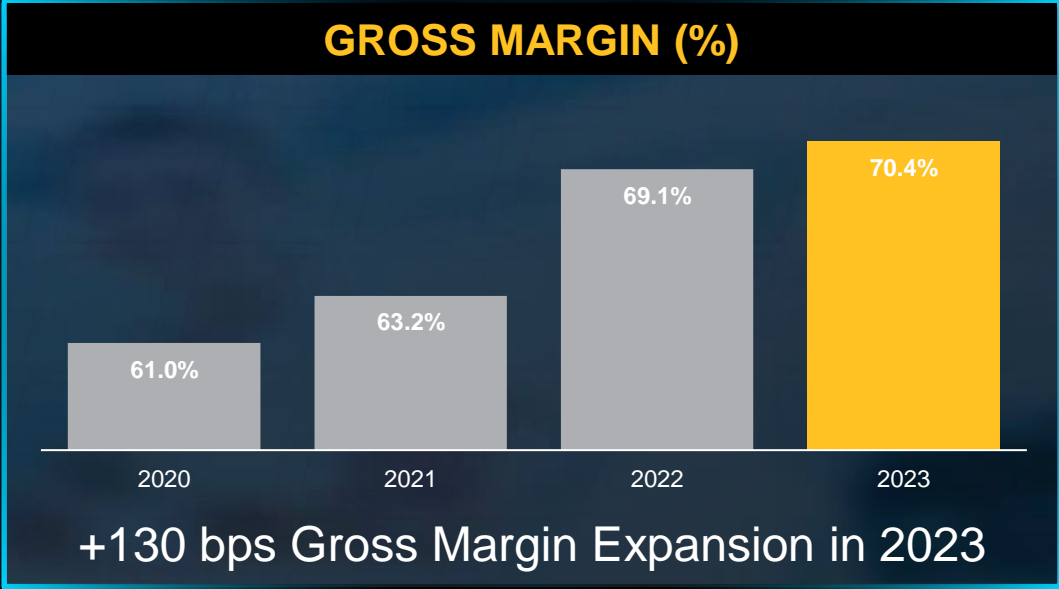
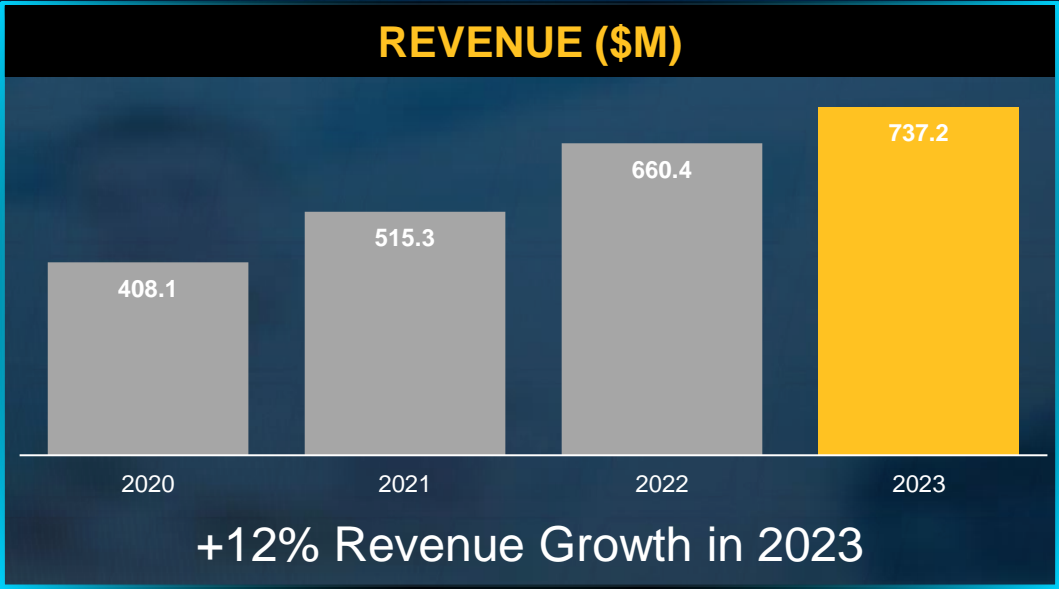


Won 4th consecutive GSA Most Respected Semi Company Award, & Best Financially Managed Semi Company Award

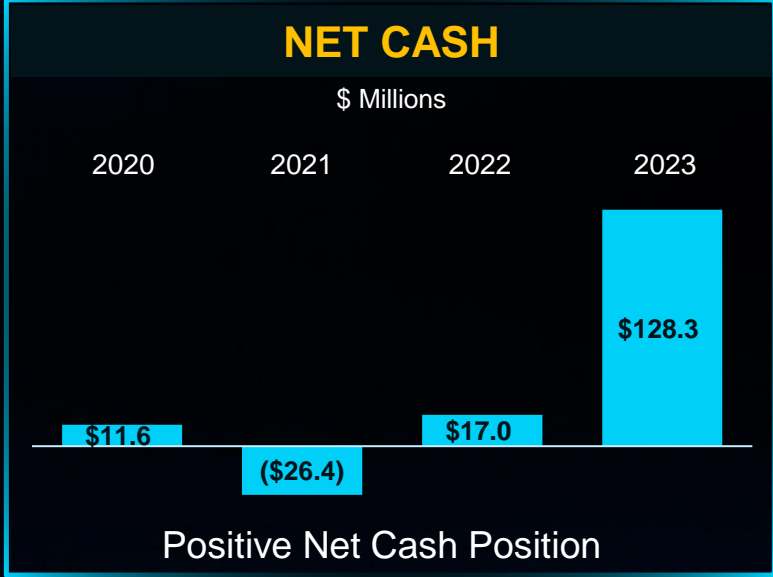
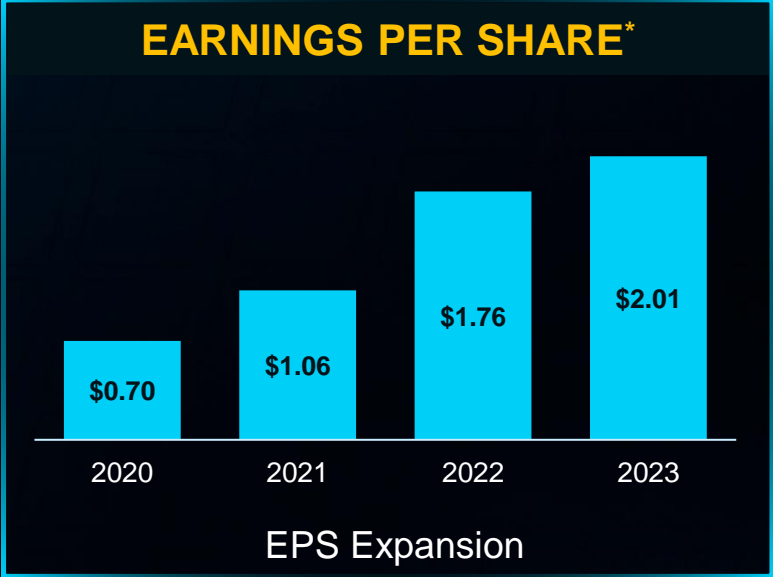
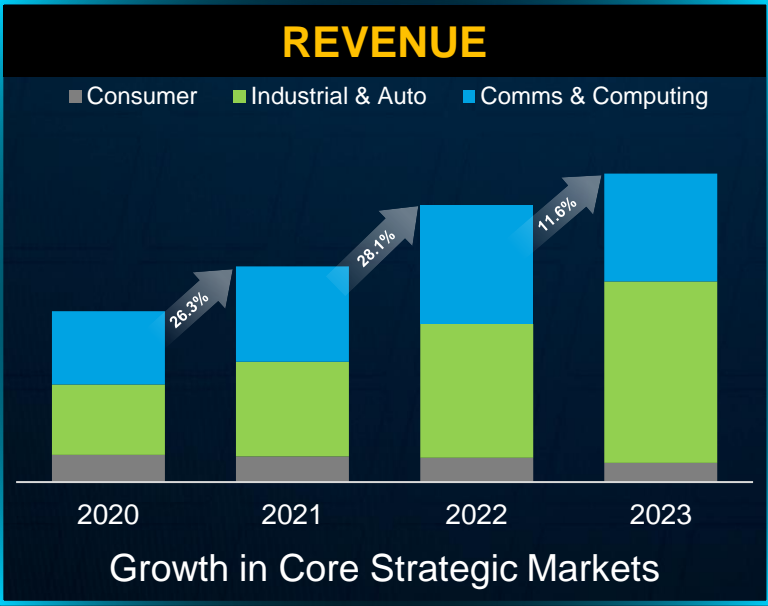


Hosted inaugural Lattice Developers Conference with 5000+ registrants

FY 2023 Financial Highlights



Strong Financial Execution



* Percentages based on non-GAAP basis. See appendix in FY'22 earnings report for reconciliation to most comparable GAAP measure.





The Low Power Programmable Leader